

SAFETY WIRE SYSTEM

1. Picture of the product

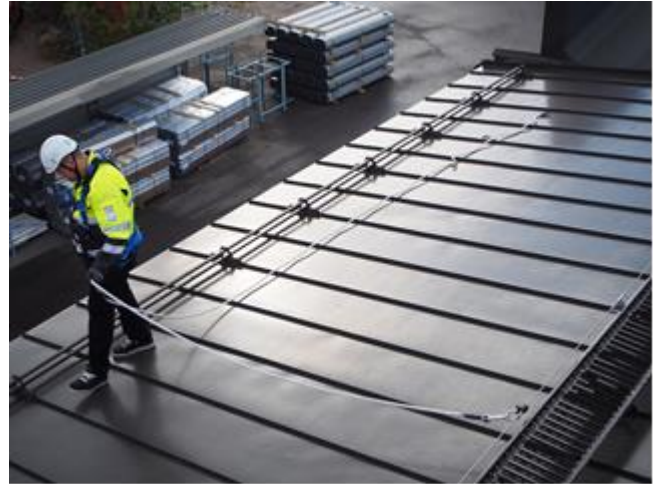


Figure 1. Illustrative photos

2. Product description

A safety wire system is sometimes more functional than a horizontal rail, such as in cases where the solution is attached to the wall of a lift machinery room or an air handler room. When a fall protection system is used for anchoring the user even in complex buildings, the need to detach and reattach the safety line is minimised this way, thereby allowing the safe maintenance of the roof.

The rope system can be attached to the wall, Nesco's roof walkway or bollards. Attaching to the wall and bollards requires site-specific design. Nesco's technical support is ready to help you.

A carriage runs freely on the wire over the attachment points. The safety wire system can be used in two directions (apart from tile roofs), but if used "over the ridge", the carriage only runs freely 3 m at a time. The safety wire system can also be used in two directions on low-pitched roofs, but the carriage only moves freely in one direction. The system can be used as a continuous anchor point in complex buildings as well.

PRODUCT CARD
NESCO

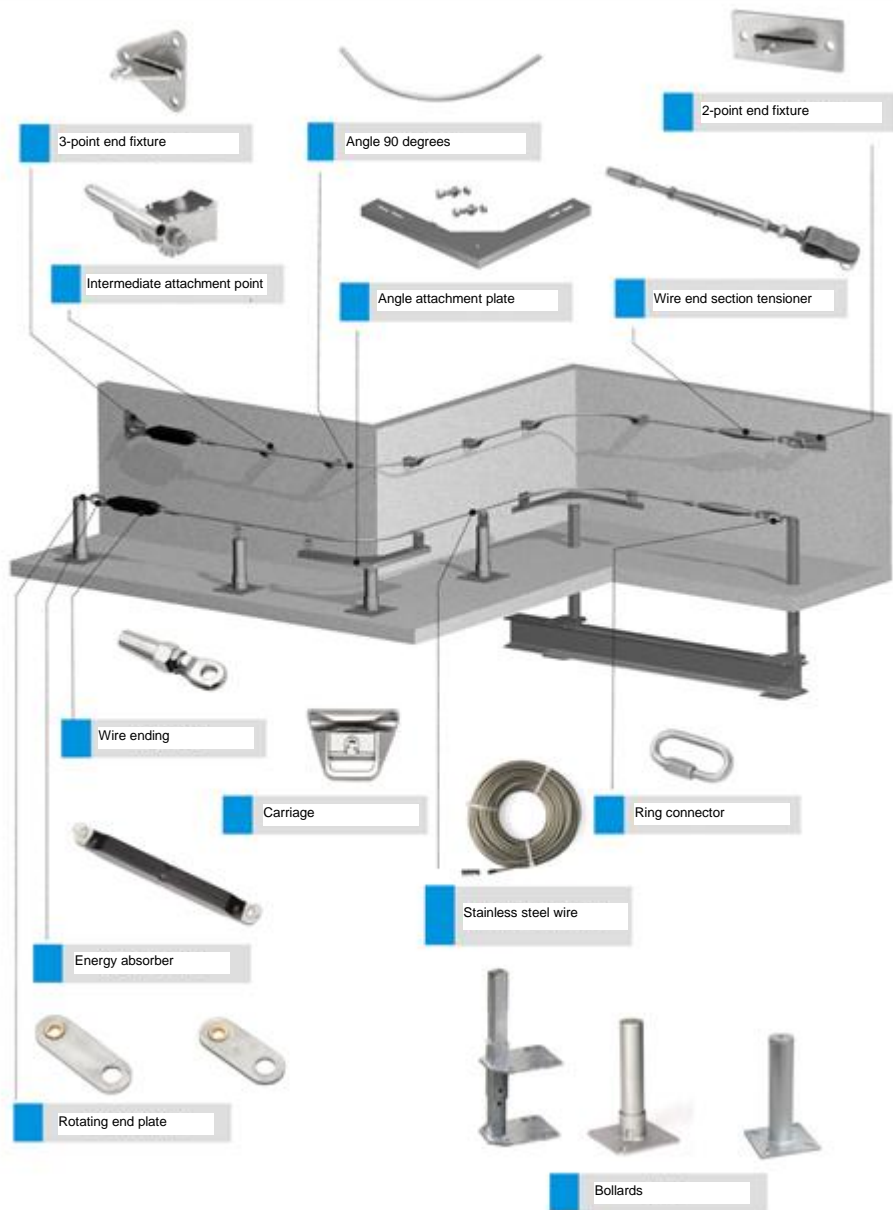


Figure 2. Parts of the system (in particular when attached to the wall and bollards).